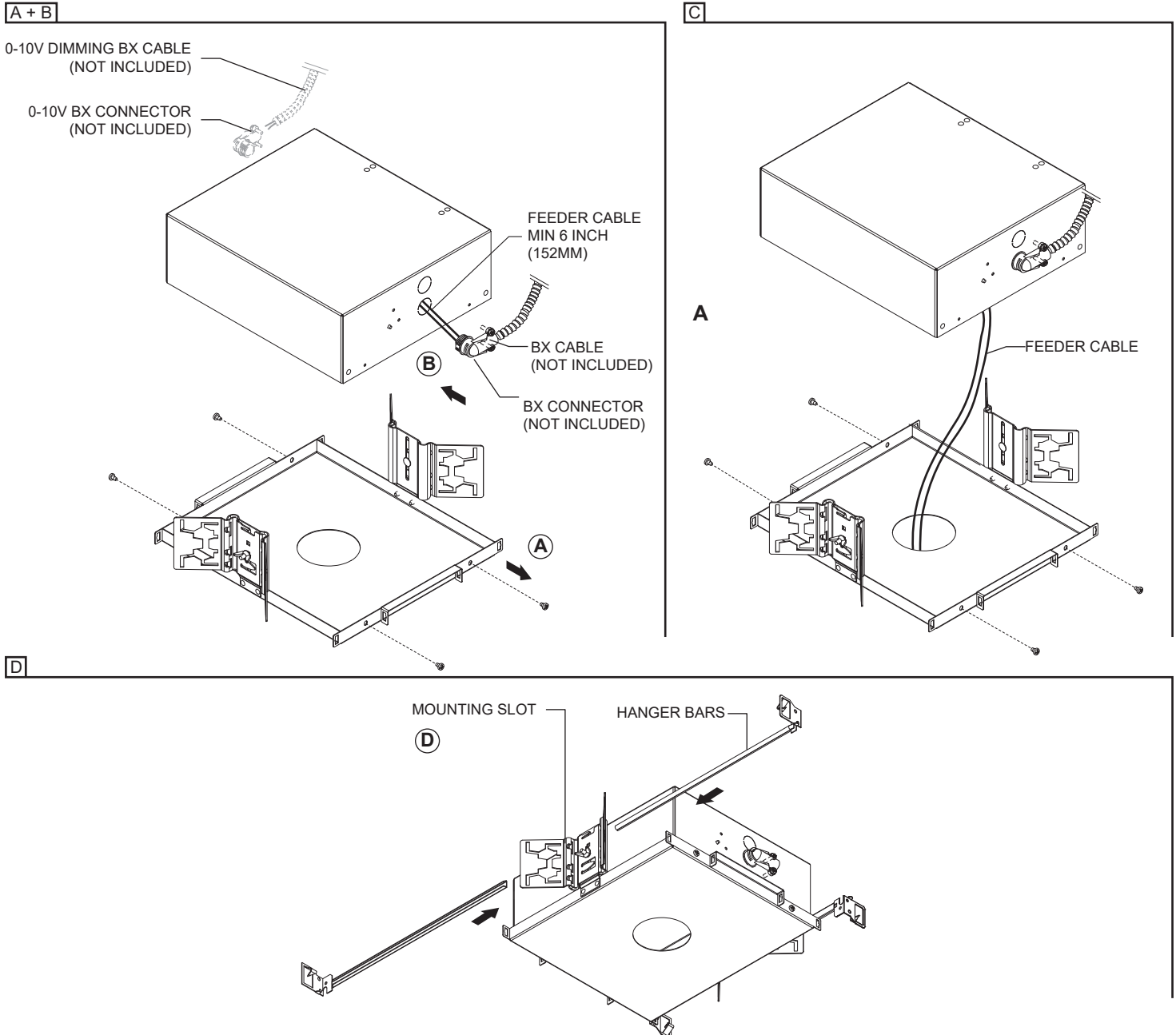


IMPORTANT - READ CAREFULLY BEFORE INSTALLING FIXTURE. RETAIN THESE INSTRUCTIONS FOR FUTURE REFERENCE.
THIS PRODUCT MUST BE INSTALLED IN ACCORDANCE WITH THE NATIONAL ELECTRICAL CODE AND ALL APPLICABLE LOCAL CODES, BY A PERSON FAMILIAR WITH THE CONSTRUCTION AND OPERATION OF THE PRODUCT, AND THE HAZARDS INVOLVED. PROPER GROUNDING IS REQUIRED FOR SAFETY.

INSULATED CEILING OR AIRTIGHT INSTALLATION (IC / CP / AT) REMOTE DRIVER(REM)

⚠ DISCONNECT THE MAIN LINE BEFORE WIRING SECONDARY CONNECTORS

- A - REMOVE (4) PHILLIPS SCREWS IN ORDER TO OPEN HOUSING.
- B - FOR INSULATED CEILING (IC) INSTALLATION: INSTALL BX CABLE (**NOT INCLUDED**) USING BX CONNECTOR (**INCLUDED**).
FOR CHICAGO PLENUM (CP) INSTALLATION: REMOVE THE KNOCKOUT, INSTALL A CONDUIT AND A CONDUIT CONNECTOR (**NOT INCLUDED**).
FOR AIRTIGHT (AT) INSTALLATION: REMOVE THE KNOCKOUT, INSTALL AN AIRTIGHT CONDUIT AND A CONDUIT CONNECTOR (**NOT INCLUDED**).
- C - CLOSE THE HOUSING BY SCREWING THE (4) PHILLIPS SCREWS PREVIOUSLY REMOVED (A). LEAVE AT LEAST 6" (152mm) OF FEEDER CABLE ACCESSIBLE FROM UNDER THE CEILING.
- D - ENGAGE (4) HANGER BARS IN HOUSING SLOTS AVAILABLE AND CONNECT THEM TOGETHER.

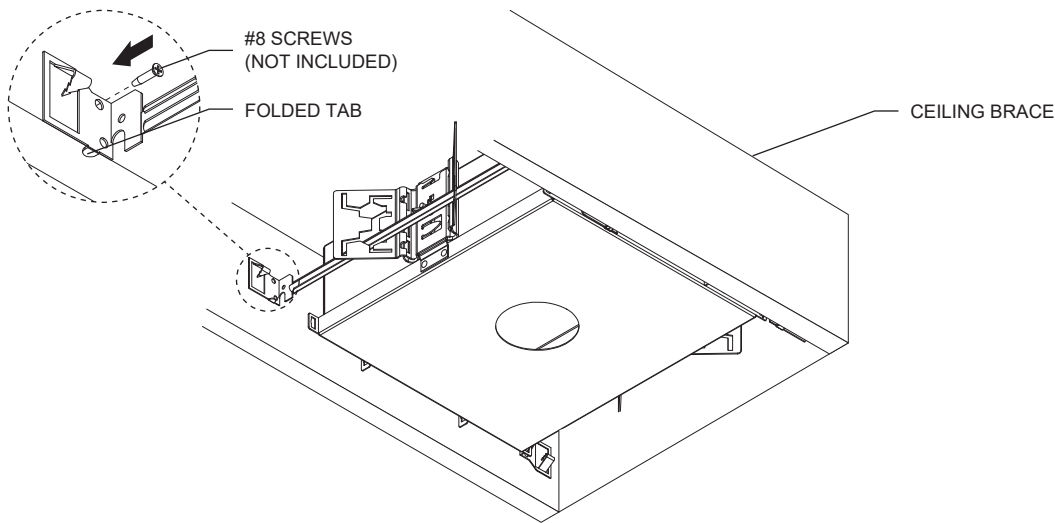


Laser 75mm

DOWNLIGHT TRIM / TRIMLESS MODEL: LAS75 - IC / CP / AT-REMOTE

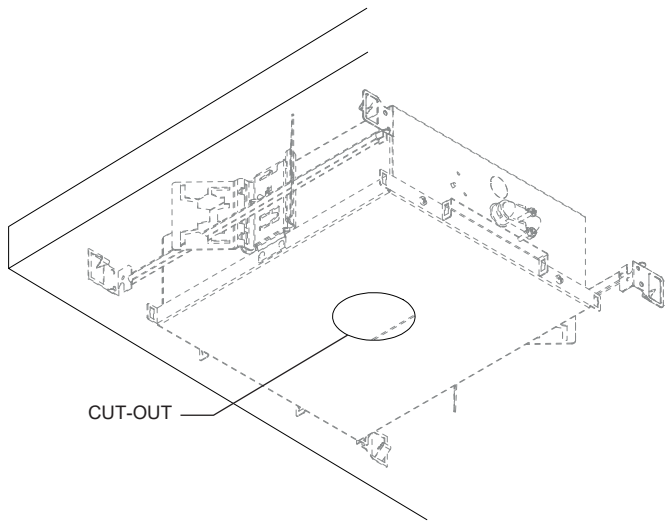
- E - FASTEN HANGER BARS TO CEILING BRACE WITH #8 SCREWS (**NOT INCLUDED**). HOUSING MUST BE FLUSH WITH THE BOTTOM OF THE CEILING BRACES.
- F - INSTALL THE DRYWALL AND MAKE THE CUT-OUT OPENING (**SEE DIMENSIONS BELOW**).

E



F

Model	Housing	Cut-out dimensions		Ceiling thickness	Clearance
LASER 75	BI-LAS75-RT-IC/CP/AT-REM	Ø 3" (Ø75mm)	TR	1/8" to 7/8" (3mm - 22mm)	4"(102mm)
	BI-LAS75-RLF-IC/CP/AT-REM		TL	1/2" to 15/16" (12.5mm - 24 mm)	
	BI-LAS75-RLA-IC/CP/AT-REM				



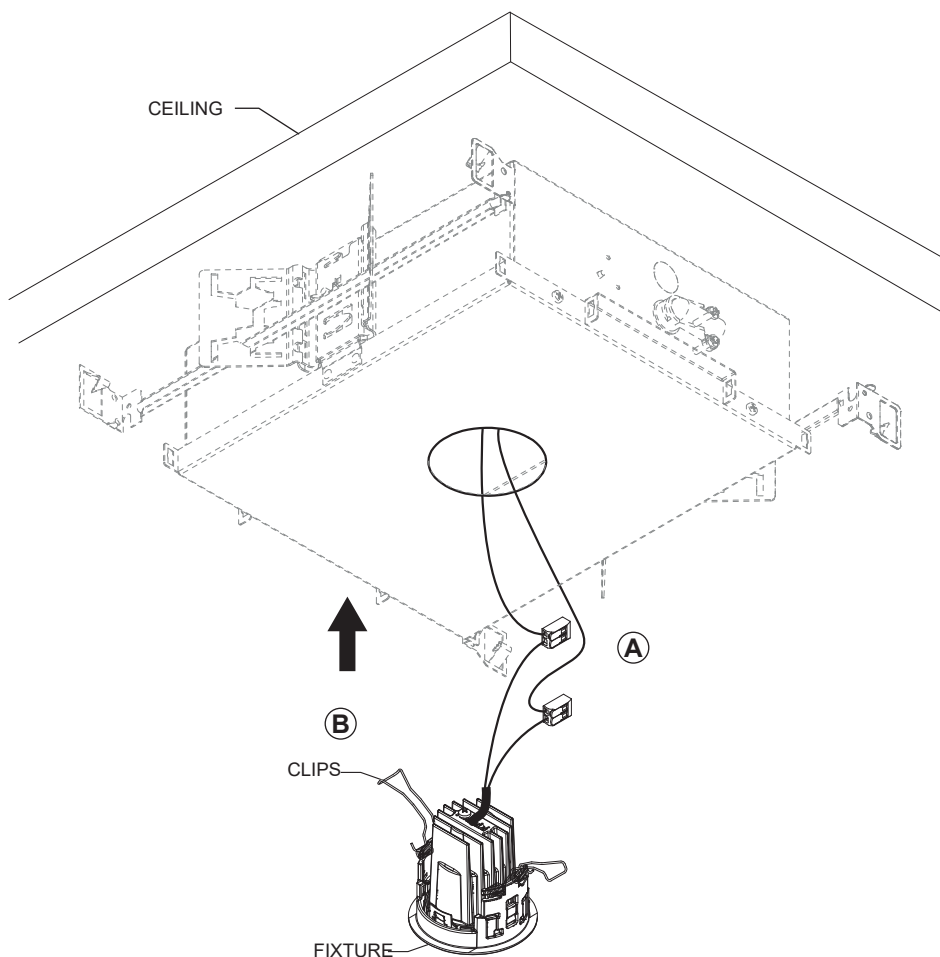
FIXTURE INSTALLATION (TRIM ONLY)

A - MAKE ALL NECESSARY CONNECTIONS USING THE QUICK CONNECTORS (INCLUDED).

B - HOLD THE (2) CLIPS UPWARD AND INSERT FIXTURE INTO CUT-OUT.

A + B

FEED BY CLASS 2

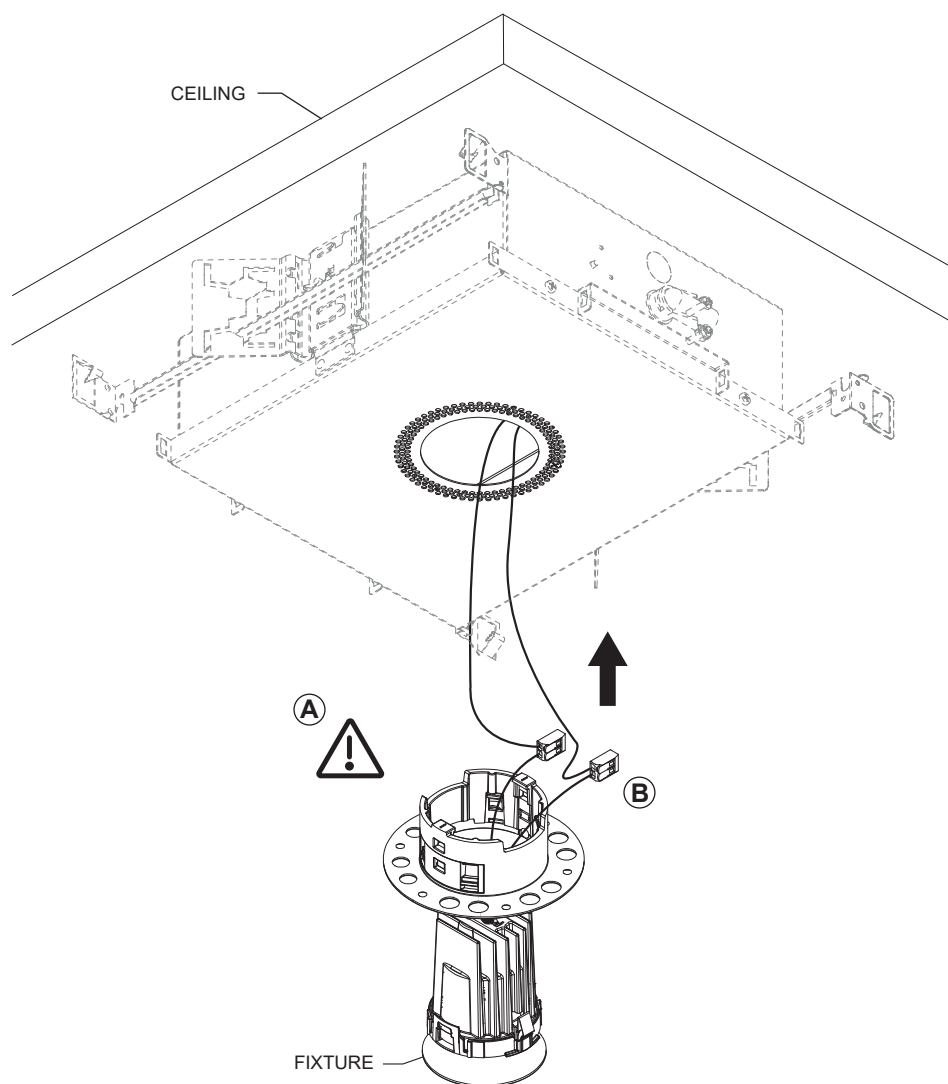


FIXTURE INSTALLATION (TRIMLESS ONLY)

- A - BEFORE CONNECTING TO THE FEEDER CABLE, MAKE SURE THAT THE TRIM KIT SHOULD BE PLACED BETWEEN THE CEILING AND THE FIXTURE WITH THE RIGHT DIRECTION
- B - MAKE ALL NECESSARY CONNECTIONS USING THE QUICK CONNECTORS (INCLUDED).

A + B

FEED BY CLASS 2



FIXTURE INSTALLATION (TRIMLESS ONLY)

C- INSERT THE TRIM KIT INTO THE CEILING CUT-OUT AND MARK AT LEAST 3 MOUNTING HOLE POSITIONS.

* FOR THE WALL WASHER INSTALLATION, POINT ONE OF THE TWO STICKERS TO THE WALL YOU WANT TO ILLUMINATE.

D- SECURE THE TRIM KIT INTO THE CEILING BY SCREWING (3) #8 SCREWS (NOT INCLUDED) UP TO THE BOTTOM OF HOUSING..

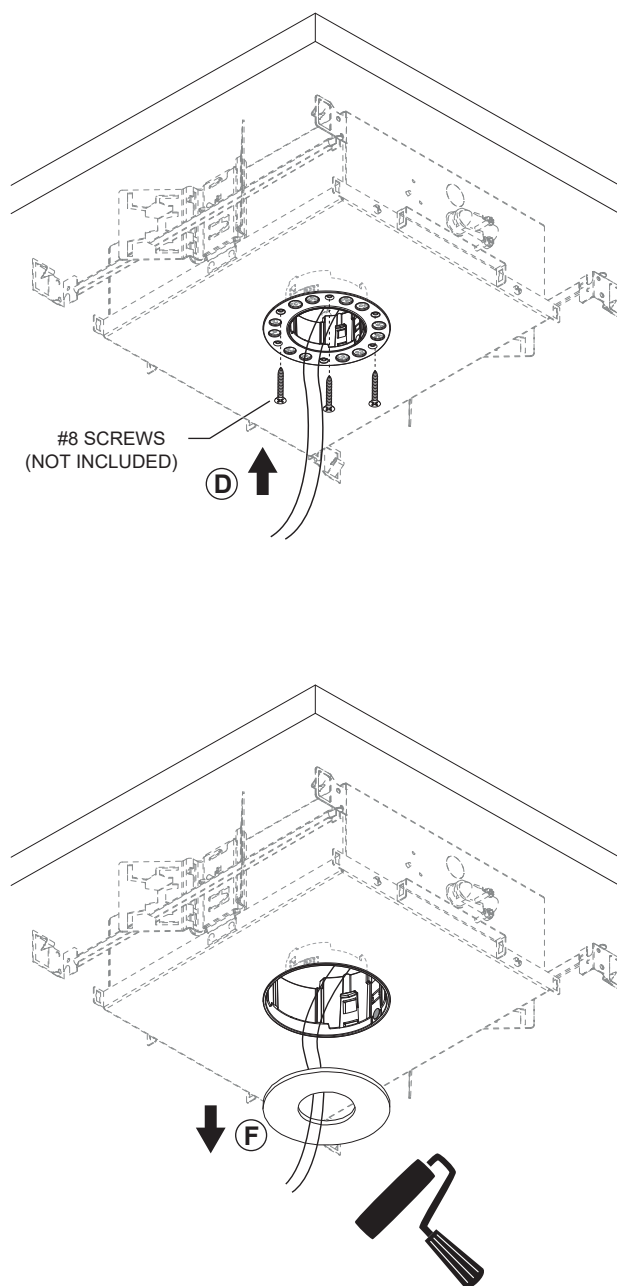
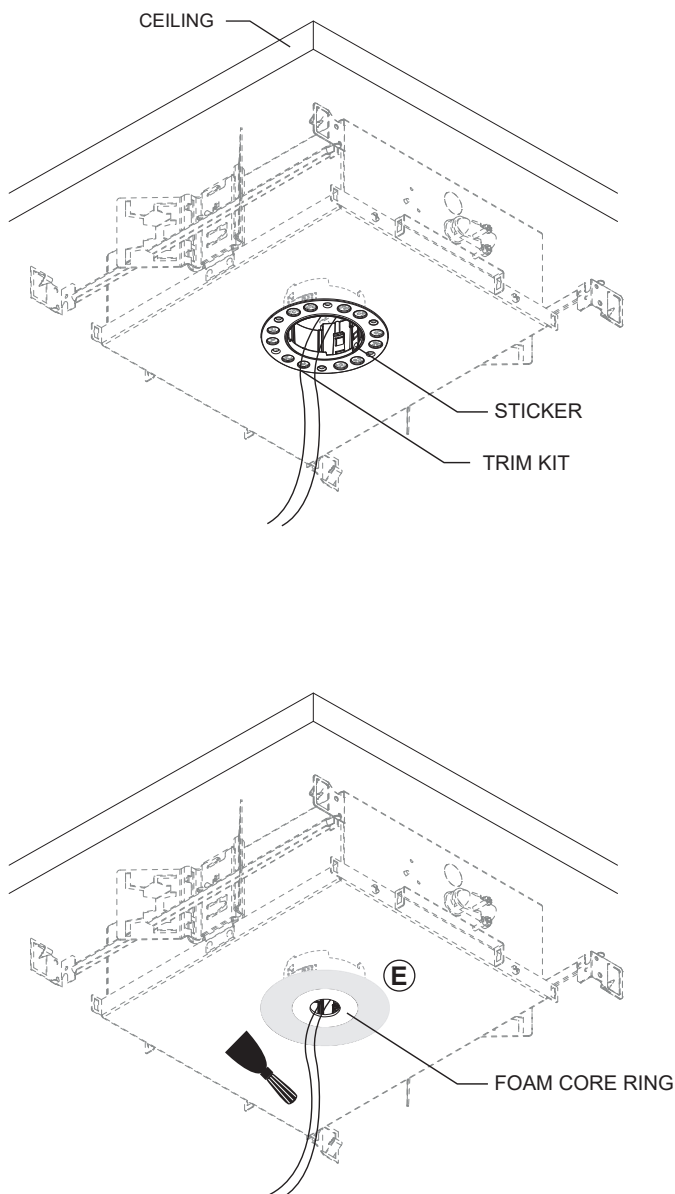
(THE LENGTH OF SCREW SHOULD BE ENOUGH TO GET TO THE BOTTOM OF HOUSING CONSIDERING THE TOTAL THICKNESS OF TRIM KIT AND CEILING.)

E- PLACE THE FOAM CORE RING (INCLUDED) INTO THE TRIM AND APPLY PLASTER TO FILL THE GAP BETWEEN THE CEILING AND THE TRIM.

*REFRAIN FROM PUTTING PLASTER ONTO THE FOAM CORE RING FOR A BETTER FINISH.

F- FINISH THE ASSEMBLY BY REMOVING THE FOAM CORE RING, SANDING AND PAINTING.

C + D + E + F



DOWNLIGHT TRIM / TRIMLESS MODEL: LAS75 - IC / CP / AT- REMOTE

*FOR TRIMLESS FIXED, PLEASE CONTINUE TO (G).

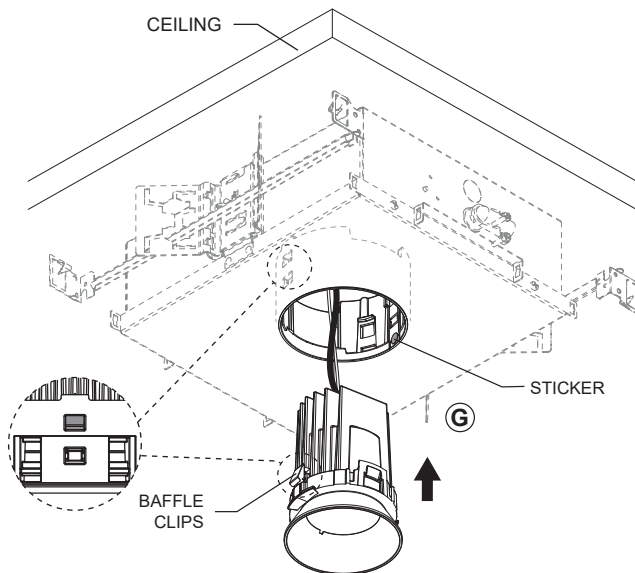
**FOR TRIMLESS ADJUSTABLE, PLEASE CONTINUE TO (H) AND (I)

*FOR TRIMLESS FIXED INSTALLATION

G - ALIGN THE BAFFLE CLIPS WITH THE STICKERS AND PUSH IT INTO THE TRIM KIT UNTIL IT CLICKS IN PLACE.

*FOR MAINTENANCE, PULL THE FIXTURE OUT OF THE CUT-OUT.

G



**FOR TRIMLESS ADJUSTABLE INSTALLATION

H - INSERT THE FIXTURE AND PUSH IT UNTIL THE RIM PASSES THE TRIM KIT CLIPS AND CLICKS IN PLACE.

I - ALIGN THE BAFFLE BRACKET WITH THE STICKERS AND PUSH IT INTO THE TRIM KIT UNTIL IT CLICKS IN PLACE.

*FOR MAINTENANCE, PULL THE FIXTURE OUT OF THE CUT-OUT.

H + I

